

The Elms

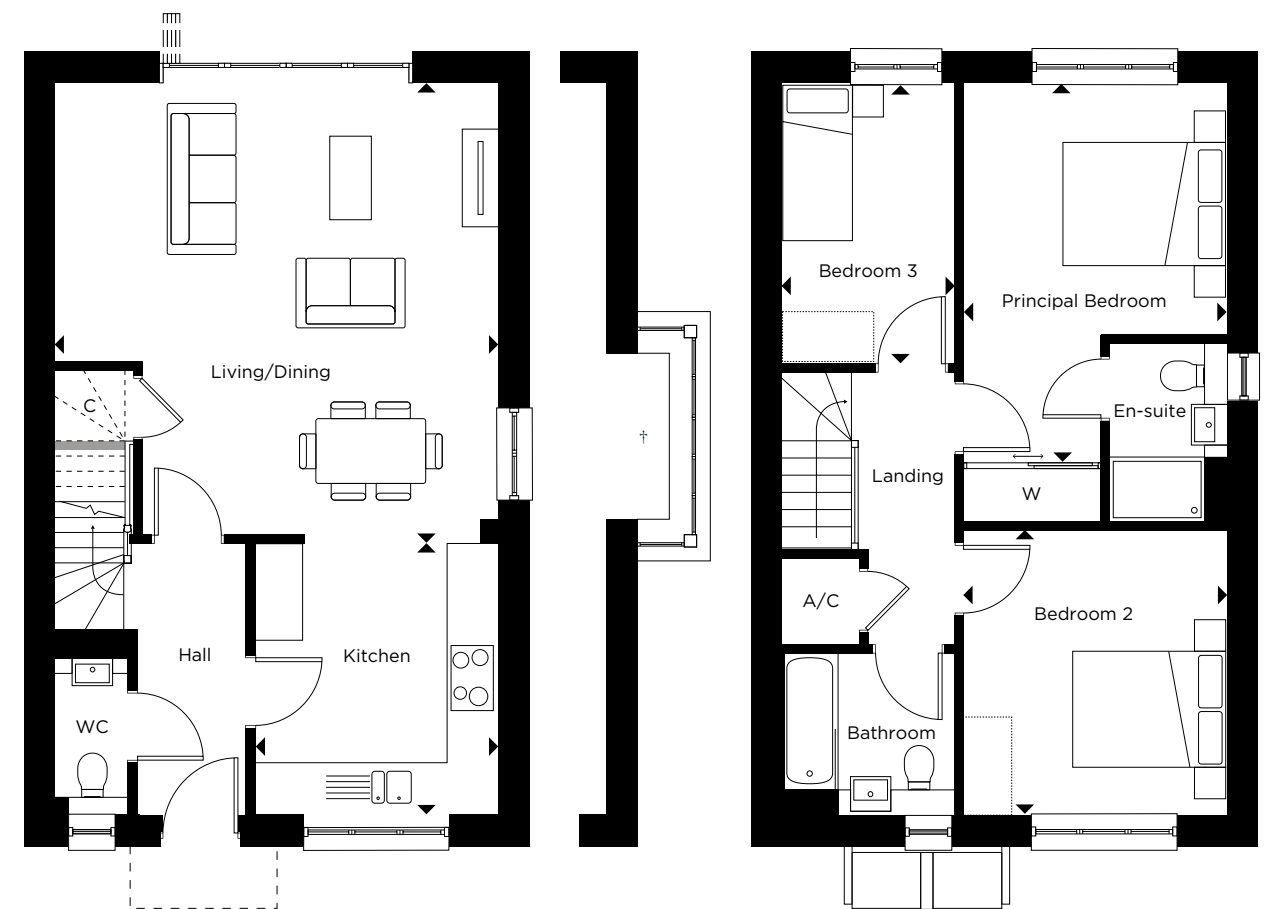
DETACHED HOUSE

3 BEDROOM

PLOTS: 4, 8, 49, 52, 53*, 64, 73*, 76*, 82*, 83*, 86*, 87, 150, 152*



Computer generated image is indicative of plots 4 & 83.



Ground floor

First floor

Ground floor

Kitchen
3.35m x 3.05m | 10'9" x 10'0"

Living/Dining
5.55m x 5.50m | 18'2" x 18'0"

First floor

Principal Bedroom
4.65m x 3.25m | 15'2" x 10'6"

Bedroom 2
3.45m x 3.25m | 11'3" x 10'6"

Bedroom 3
3.40m x 2.15m | 11'2" x 7'0"

A/C = Airing Cupboard | C = Cupboard | W = Wardrobe
----- = Indicative porch position | □ = Indicative wardrobe position

*Denotes handed plot. †Bay window to plot 152. Partial tiles to exterior applies to plot 52 & 152. Brickwork to exterior applies to plots 8, 49, 53, 64, 73, 76, 82, 86, 87 & 150. All floorplans are not to scale. Layouts provide approximate measurements only and are subject to planning. Dimensions, which are taken from the indicated points of measurement, are for guidance only and are not intended to be used for window treatments or items of furniture. Bathroom and kitchen layouts are indicative only and are subject to change. Wardrobe size and position may vary. The information contained within this document does not constitute part of any offer, contract or warranty. Whilst the plans have been prepared with all due care for the convenience of the intending purchaser, the information contained herein is a preliminary guide only.