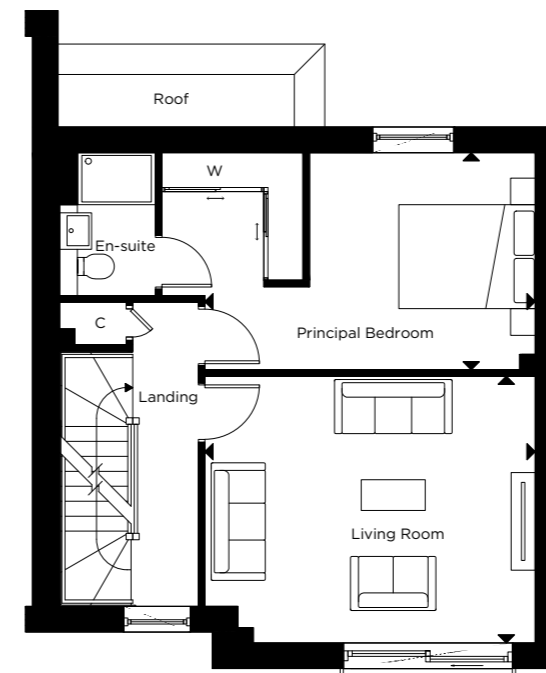


# The Eliot

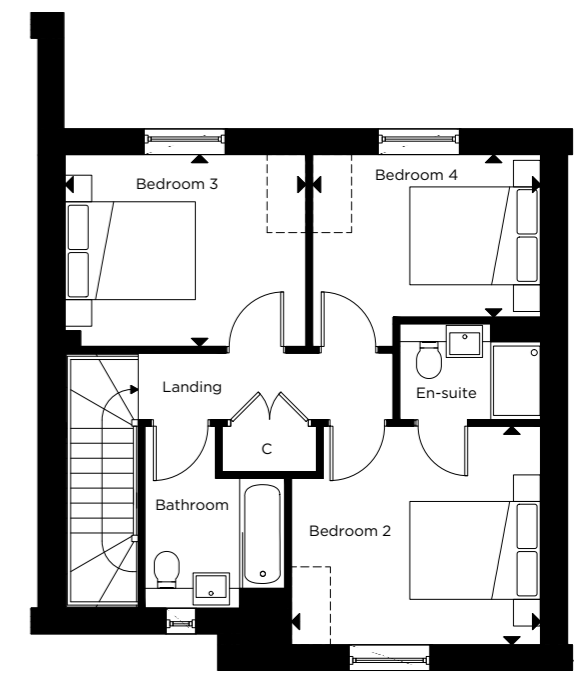
## FOUR BEDROOM HOUSE

With integral garage

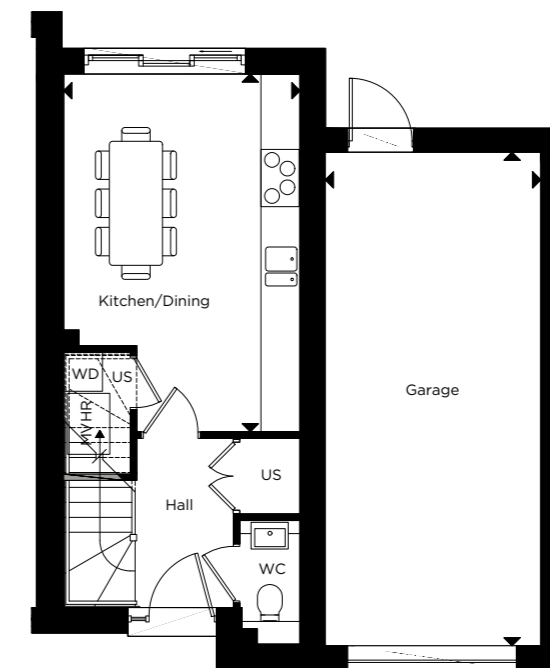
PLOTS 4\*, 5, 8\*, 9, 13\*, 14, 17\*, 18, 49 & 50\*



FIRST FLOOR



SECOND FLOOR



GROUND FLOOR

### GROUND FLOOR

Kitchen/Dining	3.60m x 5.50m	11'8" x 18'0"
Garage	7.55m x 3.35m	24'7" x 11'0"

### FIRST FLOOR

Living Room	5.05m x 4.10m	16'5" x 13'5"
Principal Bedroom	5.10m x 3.30m	16'8" x 10'8"

### SECOND FLOOR

Bedroom 2	3.80m x 3.35m	12'5" x 11'0"
Bedroom 3	3.70m x 2.95m	12'1" x 9'7"
Bedroom 4	3.50m x 2.50m	11'5" x 8'2"

\*Handed to floorplan shown

C-CUPBOARD W-WARDROBE US-UTILITY STORE -INDICATIVE WARDROBE POSITION

-WASHER DRYER -MECHANICAL VENTILATION WITH HEAT RECOVERY

Floorplan layouts are not to scale. House layouts provide approximate measurements only and are subject to planning. Dimensions, which are taken from the indicated points of measurements are for guidance only and are not intended to be used for window treatments or items of furniture. Bathroom and kitchen layouts are indicative only and are subject to change. Wardrobe size and position may vary. The information contained within this document does not constitute part of any offer, contract or warranty. Whilst the plans have been prepared with all due care for convenience of the intending purchaser, the information herein is a preliminary guide only.