

The Robinson

FOUR BEDROOM HOUSE

With integral garage

PLOTS 20, 25* & 52



GROUND FLOOR

Kitchen/Dining/Living	7.05m x 3.90m	23'1" x 12'9"
Family Room	5.25m x 3.95m	17'2" x 12'11"
Garage	7.10m x 2.90m	23'3" x 9'6"

FIRST FLOOR

Principal Bedroom	5.25m x 3.90m	17'2" x 12'9"
Bedroom 4	2.80m x 2.60m	9'2" x 8'6"
Terrace 1	7.00m x 7.30m	22'11" x 23'11"
Terrace 2	3.85m x 1.35m	12'7" x 4'5"

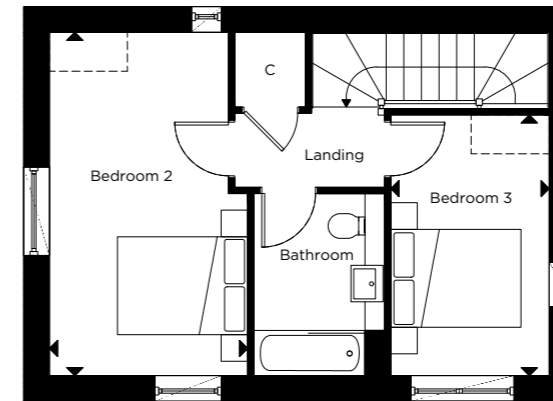
SECOND FLOOR

Bedroom 2	5.25m x 3.05m	17'2" x 10'0"
Bedroom 3	4.00m x 2.40m	13'1" x 7'10"

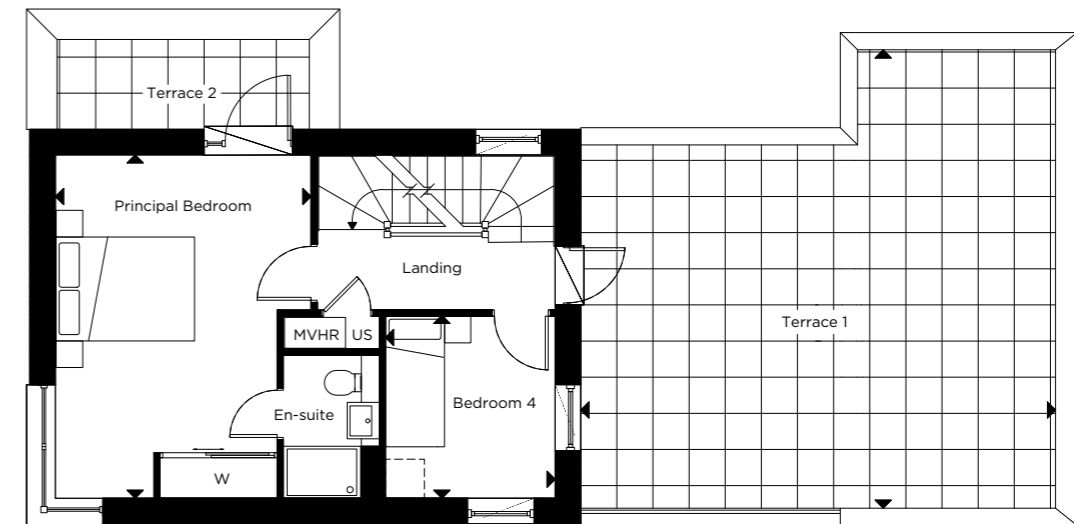
*Handed to floorplan shown

C-CUPBOARD W-WARDROBE US-UTILITY STORE -INDICATIVE WARDROBE POSITION

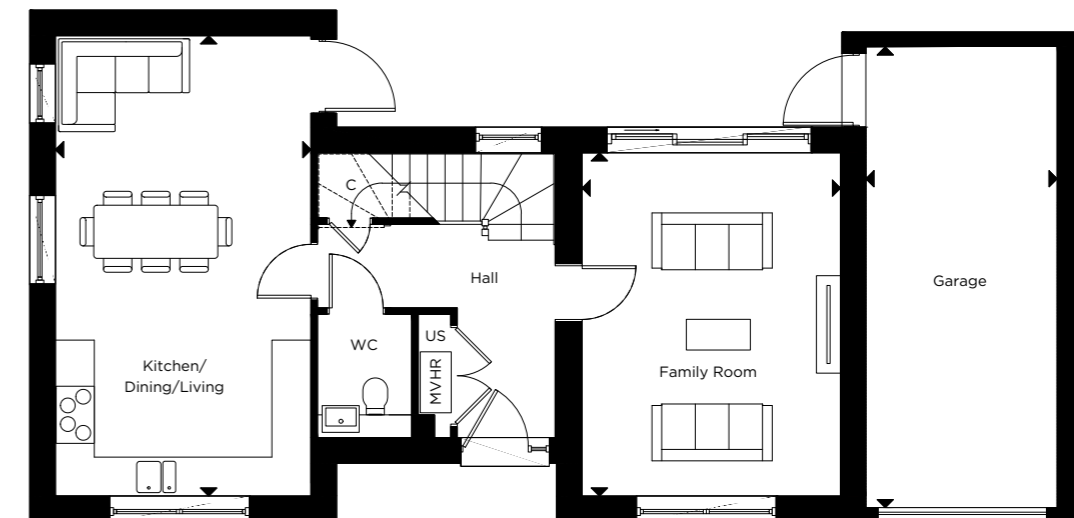
-MECHANICAL VENTILATION WITH HEAT RECOVERY



SECOND FLOOR



FIRST FLOOR



GROUND FLOOR

Floorplan layouts are not to scale. House layouts provide approximate measurements only and are subject to planning. Dimensions, which are taken from the indicated points of measurements are for guidance only and are not intended to be used for window treatments or items of furniture. Bathroom and kitchen layouts are indicative only and are subject to change. Wardrobe size and position may vary. The information contained within this document does not constitute part of any offer, contract or warranty. Whilst the plans have been prepared with all due care for convenience of the intending purchaser, the information herein is a preliminary guide only.