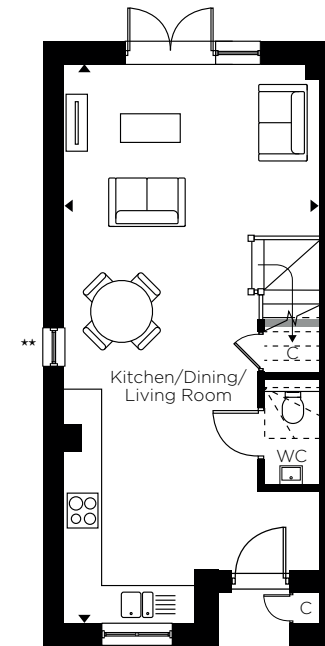


# THE AUSTIN HOUSES

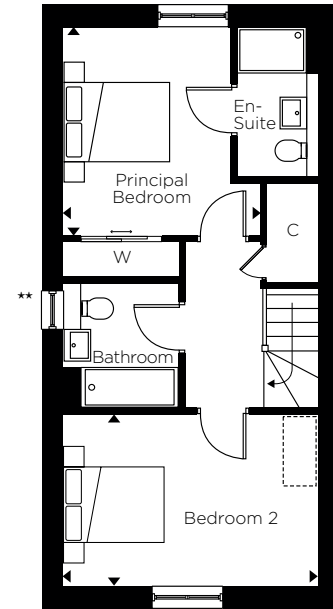
Plots 89, 90\*, 91, 92\*, 93, 94\* & 95



Indicative computer generated image of Plot 95 at The Austin Houses, St James Quay.



GROUND FLOOR



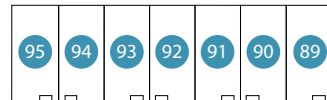
FIRST FLOOR

## GROUND FLOOR

**Kitchen/Dining/Living Room**  
4.40m x 9.65m 14'5" x 31'7"

## FIRST FLOOR

**Principal Bedroom**  
3.40m x 3.60m 11'1" x 11'9"  
**Bedroom 2**  
4.40m x 2.95m 14'5" x 9'9"



\* Handed to floorplan shown

\*\* Window to Plot 95 only

C - Cupboard W - Wardrobe [ ] - Indicative Wardrobe Position

Layouts provide approximate measurements only and are subject to planning. Dimensions, which are taken from the indicated points of measurement, are for guidance only and are not intended to be used for window treatments or items of furniture. Bathroom and kitchen layouts are indicative only and are subject to change. Wardrobe size and position may vary. The information contained within this document does not constitute part of any offer, contract or warranty. Whilst the plans have been prepared with all due care for the convenience of the intending purchaser, the information contained herein is a preliminary guide only.