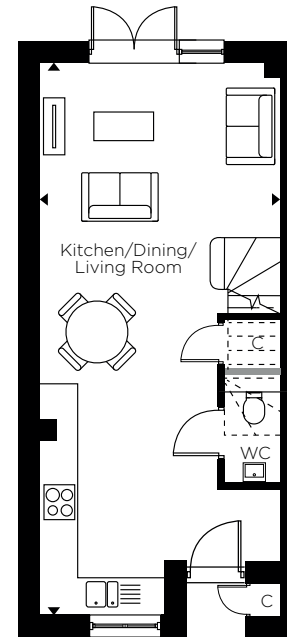
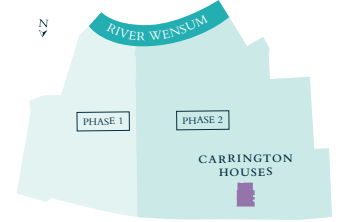
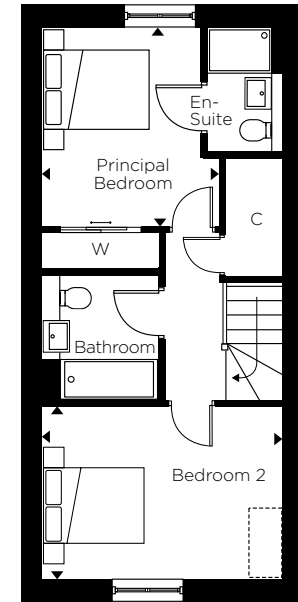


THE CARRINGTON HOUSES

Plots 113 & 114*



GROUND FLOOR



FIRST FLOOR

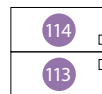
GROUND FLOOR

Kitchen/Dining/Living Room
4.15m x 9.55m 13'7" x 31'3"

FIRST FLOOR

Principal Bedroom
4.15m x 3.05m 13'7" x 10'0"

Bedroom 2
4.15m x 3.00m 13'7" x 9'10"



* Handed to floorplan shown

C - Cupboard W - Wardrobe [] - Indicative Wardrobe Position

Layouts provide approximate measurements only and are subject to planning. Dimensions, which are taken from the indicated points of measurement, are for guidance only and are not intended to be used for window treatments or items of furniture. Bathroom and kitchen layouts are indicative only and are subject to change. Wardrobe size and position may vary. The information contained within this document does not constitute part of any offer, contract or warranty. Whilst the plans have been prepared with all due care for the convenience of the intending purchaser, the information contained herein is a preliminary guide only.