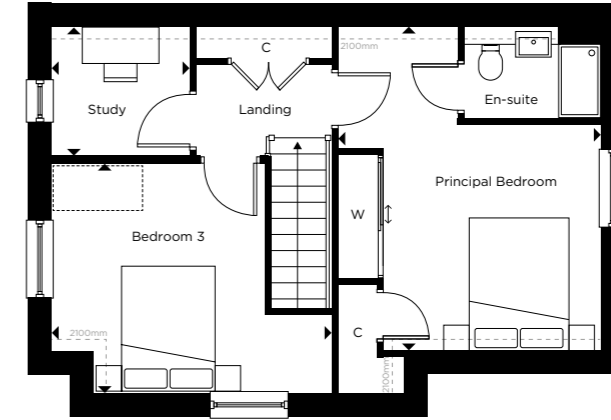
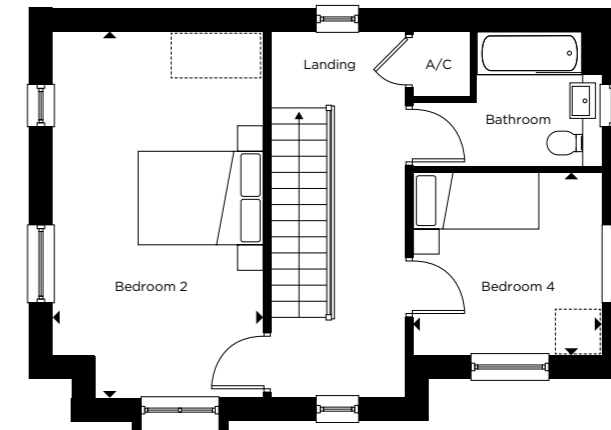


# THE PERRY

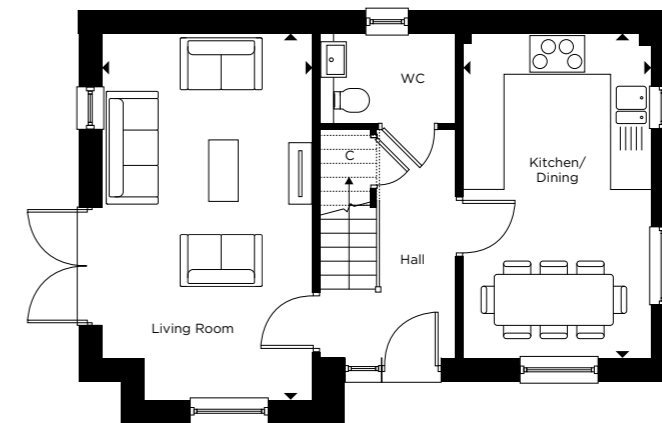
4 BEDROOM DETACHED HOUSE  
PLOT 6



SECOND FLOOR



FIRST FLOOR



GROUND FLOOR

## GROUND FLOOR

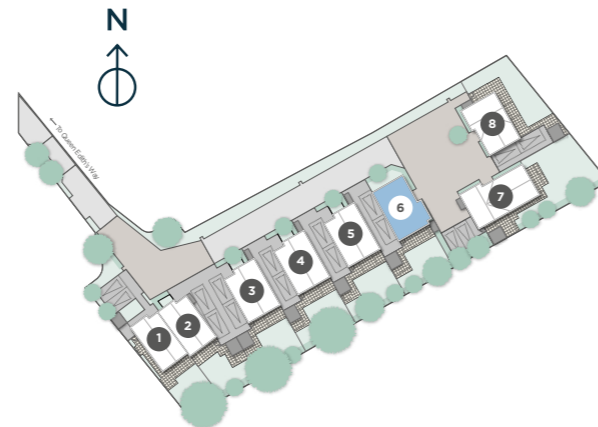
Kitchen/Dining	3.00m x 5.15m	9'10" x 16'10"
Living Room	3.45m x 5.80m	11'3" x 19'0"

## FIRST FLOOR

Study	2.20m x 2.10m	7'2" x 6'10"
Bedroom 2	5.80m x 3.40m	19'0" x 11'3"
Bedroom 4	2.95m x 3.00m	9'8" x 9'10"

## SECOND FLOOR

Principal Bedroom	3.45m x 3.60m	11'3" x 11'9"
Bedroom 3	3.40m x 3.70m	11'1" x 12'1"



C - CUPBOARD W - WARDROBE A/C - AIRING CUPBOARD [---] - INDICATIVE WARDROBE POSITION - - - - RESTRICTED HEAD HEIGHT (mm)

Floorplan layouts are not to scale. House layouts provide approximate measurements only and are subject to planning. Dimensions, which are taken from the indicated points of measurements are for guidance only and are not intended to be used for window treatments or items of furniture. Bathroom and kitchen layouts are indicative only and are subject to change. Wardrobe size and position may vary. The information contained within this document does not constitute part of any offer, contract or warranty. Whilst the plans have been prepared with all due care for convenience of the intending purchaser, the information herein is a preliminary guide only.