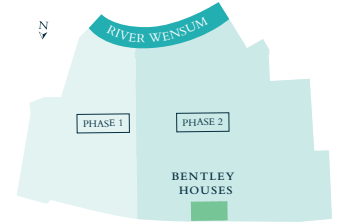
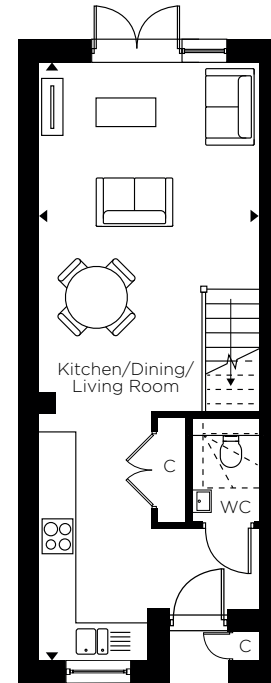


# THE BENTLEY HOUSES

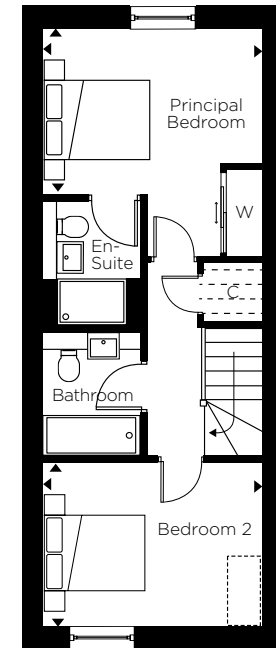
Plots 108, 109\*, 110, 111\* & 112



Indicative computer generated image of Plot 110 at The Bentley Houses, St James Quay.



GROUND FLOOR



FIRST FLOOR

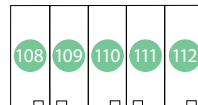
## GROUND FLOOR

**Kitchen/Dining/Living Room**  
3.75m x 10.35m 12'3" x 33'11"

## FIRST FLOOR

**Principal Bedroom**  
3.75m x 3.90m 12'3" x 12'9"

**Bedroom 2**  
3.75m x 2.80m 12'3" x 9'2"



\* Handed to floorplan shown

C - Cupboard W - Wardrobe [ ] - Indicative Wardrobe Position

Layouts provide approximate measurements only and are subject to planning. Dimensions, which are taken from the indicated points of measurement, are for guidance only and are not intended to be used for window treatments or items of furniture. Bathroom and kitchen layouts are indicative only and are subject to change. Wardrobe size and position may vary. The information contained within this document does not constitute part of any offer, contract or warranty. Whilst the plans have been prepared with all due care for the convenience of the intending purchaser, the information contained herein is a preliminary guide only.